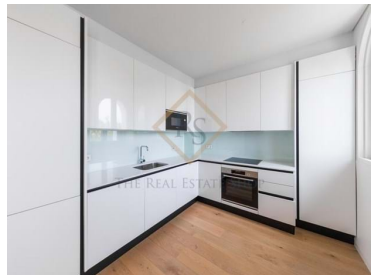
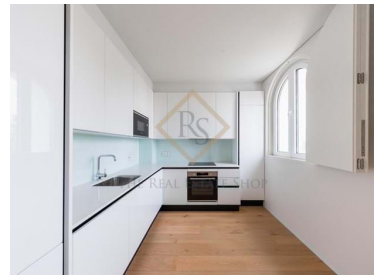





## Alvalade - Apartment



 2  
Bedrooms

 2  
Bathrooms

 146,77  
Area (m<sup>2</sup>)

  
Garage

  
Swimming Pool

**925 000 €**  
(EUR €)

## T2 | Campo Grande | Duplex

T2 Duplex inserted in a condominium built in 2023, modern, spacious, with swimming pool, sauna, gym and garden, facing the Campo Grande garden.

The intersection of the rehabilitation of architectural structures and new construction are at the origin of this project,

New apartment, with noble and sophisticated materials, excellent finishes. With plenty of natural light, equipped kitchen and air conditioning. It has 2 parking spaces and storage room.

It is located next to access roads such as the A5, the N-S Axis, metro and bus stations.

Just 1km from Lisbon's main university campus and Santa Maria hospital. In its surroundings you will



**Sofia Tonim**

Founder and CEO

+351969275559 <sup>2</sup> · 211649165 <sup>1</sup>

st@therealestateshop.pt

**T +351 969275559 <sup>2</sup> · T +351 910481393 <sup>2</sup> · E officemanager@therealestateshop.pt**

**Travessa Fábrica das Sedas 28A  
AMI 14313**

<sup>1</sup> (Call to national fixed network) | <sup>2</sup> (Call to national mobile network)



23-TRES046

Reference

Scan the QR code to view the property



find numerous commercial establishments and even the famous Campo Pequeno Shopping Mall.

All this without giving up the tranquility provided by the green garden of Campo Grande. In the heart of Lisbon, surrounded by everything you need for a comfortable and convenient life.

## Property Features

- Heating
- Pool
- Garage
- Built year: 2023
- Storage / utility room
- Central location
- Air conditioning
- Garden
- Furnished
- Private condominium
- Lift
- Balcony



**Sofia Tonim**

Founder and CEO

+351969275559 <sup>2</sup> · 211649165 <sup>1</sup>

st@therealestateshop.pt

**T +351 969275559 <sup>2</sup> · T +351 910481393 <sup>2</sup> · E officemanager@therealestateshop.pt**

**Travessa Fábrica das Sedas 28A  
AMI 14313**

<sup>1</sup> (Call to national fixed network) | <sup>2</sup> (Call to national mobile network)