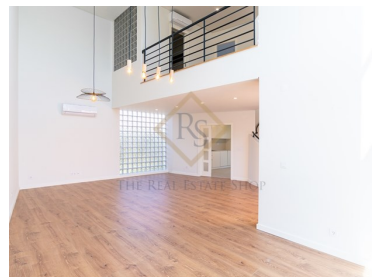
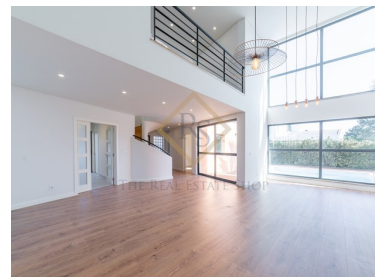
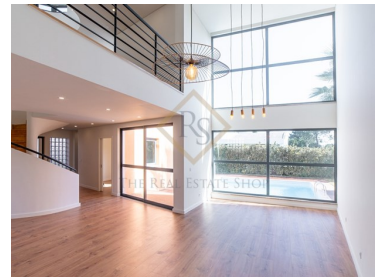




Quinta do Anjo - Villa



 3	 4	 200	 470			540 000 €
Bedrooms	Bathrooms	Area (m ²)	Land Area (m ²)	Garage	Swimming Pool	(EUR €)

V3+1 | Palmela | Rehabilitated

Completely rehabilitated 3+1 bedroom villa, inserted in a condominium of 4 villas with tennis and golf court, providing a quiet life in the suburbs of Lisbon.

Palmela, in the district of Setúbal, is a charming city that combines history, nature, and quality of life, it is known for its cozy and quiet atmosphere, ideal for those looking to escape the fast pace of big cities. The city has a rich historical heritage, with emphasis on the Castle of Palmela, an imposing landmark with stunning views of the Setúbal Peninsula and the Sado Estuary. Palmela is surrounded by spectacular natural landscapes, such as the Arrábida Natural Park, which offers beaches with crystal clear waters, hiking trails and outdoor sports opportunities. Located just minutes from Setúbal and about 40 km from Lisbon, Palmela offers easy access to the capital's amenities and opportunities, while maintaining the charm of a smaller, less congested city. The city has good schools, including St. Peter's International School, health services, restaurants and a varied cultural



Sofia Tonim

Founder and CEO

+351969275559 ² · 211649165 ¹

st@therealestateshop.pt

T +351 969275559 ² · T +351 910481393 ² · E officemanager@therealestateshop.pt

Travessa Fábrica das Sedas 28A
AMI 14313

¹ (Call to national fixed network) | ² (Call to national mobile network)



23-TRES086

Reference

Scan the QR code to view the property



offer.

The property is spread over 2 floors, with spacious rooms, modern details and plenty of natural light. Downstairs we find a living room, kitchen, office, bathroom, suite and lounge space with exit to the garden with swimming pool. Upstairs there is another suite, a bedroom and bathroom, as well as a large terrace. The villa also has a garage.

Property Features

- Heating
- Pool
- Tennis Court
- Garage
- Private condominium
- Balcony
- Air conditioning
- Garden
- Terrace
- Built year: 2021
- Security alarm



Sofia Tonim

Founder and CEO

+351969275559 ² · 211649165 ¹

st@therealestateshop.pt

T +351 969275559 ² · T +351 910481393 ² · E officemanager@therealestateshop.pt

**Travessa Fábrica das Sedas 28A
AMI 14313**

¹ (Call to national fixed network) | ² (Call to national mobile network)